



**Construction Productivity Software**



# ViewPro

A custom-built construction project management tool to easily capture accurate construction data at the workplace. ViewPro Productivity simplifies the daily capture of data and ensures that everything is recorded in the correct and most efficient way. All daily information collected is compiled and tracked against the project's budget allowing ViewPro to calculate all Production Rates, Utilisations, Unit Rates and Production Factors automatically without effort or errors.

ViewPro Productivity saves time and effort each day and allows engineers and supervisors to concentrate on running projects so they can fix the problems rather than spending countless hours looking for them. Site progress, comments, safety stats and pictures are also recorded in our online site diary for the ultimate project record.

With the power to highlight troubled areas and activities as soon as they fall into the red, ViewPro Productivity allows site teams to fix problems in real time. Early detection advantage can save a project countless dollars and time.

All this is achieved by spending less time on average recording the daily data than site teams are currently doing.



## Value to Project

### Track Construction

Custom-built construction project management tools to easily capture accurate construction data at the workplace. Save time every day on every project by streamlining logging processes and ensuring correct worker, equipment & material history is tracked.

### Analyse Progress in Real Time

Live charts and graphs, consistent reports, automatically generated at the click of a button in a format that best suits your needs. See where resources are spent in an instant. No more late nights spent on spreadsheets. Skim for information, or explore construction projects in depth with our intuitive data visualisations. All tiers of the workforce can benefit, from CEO to Steelfixer.

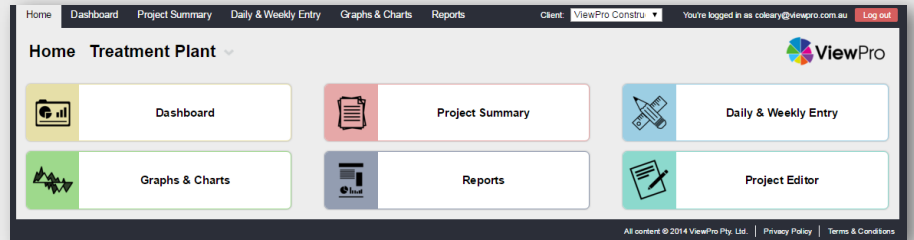
### React in Time

Live data results in quicker reactions to problems on site, saving time, money and resources. Remove guesswork by accurately allocating resources to the areas and activities that need it most. Stem resource overspending by tracking progress during construction, not after.



## Features

- Cloud based system with all users sharing data
- Full transparency and traceability of project data
- Simplified data entry
- Automatic report creation
- Live budget -vs- actual analysis
- Real time feedback to highlight budget slippages
- Problems identified in real time
- Tighter cost control
- Improved budget analysis



Project Summary Treatment Plant										
Area & Activity	Revised Budget Quantity (UNIT)	Quantity Complete	Revised Budget Manhours	Earned Manhours	Spent Manhours	% Complete	Production Factor	Budget Rate (\$)	Actual Rate (\$)	
▲ Civil			31,063	26,733	25,319	86%	0.95			
▲ Earthworks			13,222	12,768	10,952	97%	0.86			
▼ Roads			7,250	7,250	5,552	100%	0.77			
▲ Levee			5,972	5,518	5,400	92%	0.98			
▲ South			3,210	2,993	2,580	93%	0.86			
▲ Embankment			2,710	2,703	2,430	100%	0.90			
Strip Topsoil	40,000	40,000	220	220	210	100%	0.95	\$1.75	\$1.23	
Foundation Prep	40,000	40,000	290	290	270	100%	0.93	\$2.05	\$1.14	
General Fill	90,000	89,700	2,200	2,193	1,950	100%	0.89	\$10.56	\$7.03	
▼ Batters			500	290	150	58%	0.52			
▼ North			2,763	2,525	2,820	91%	1.12			
▼ Concrete			17,840	13,965	14,387	78%	1.03			
▼ Overhead			0	0	4,560					
▼ Variations			72,005	0	0	0%				

## Project Summary

A table to oversee the project, task-by-task.

Project Summary is the heart of ViewPro, allowing users to drill down into their project and inspect shortfalls.

Simple Green and Red indicators help highlight how each task is tracking, empowering users with intricate knowledge of their project as it progresses.

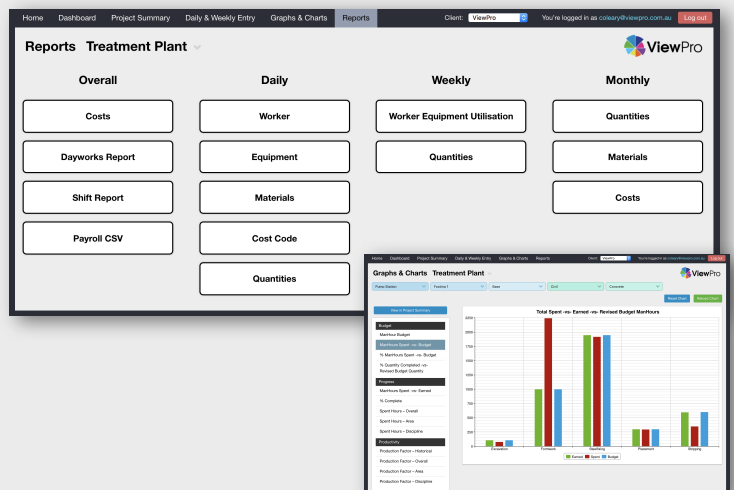
## Reports & Charts

Created to allow users to visually inspect & drill into the project.

Dynamic Smart Charts help users to gain a unique perspective of their projects. Automatically generated from the data captured, charts portray key information about Budgets, Progress & Productivity.

Automatic Reports generated daily, weekly and monthly at the touch of a button.

Powerful reports give users a way to view their progress & expenditures. Multiple reports generate automatically from the data captured by the supervisors and engineers on site, day to day.



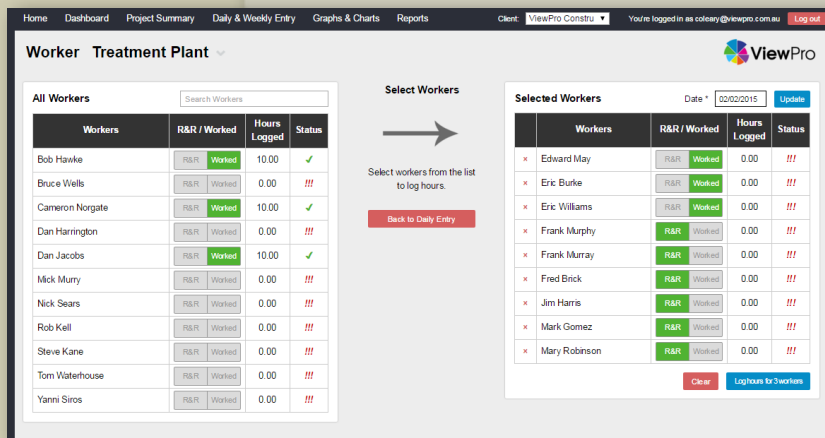
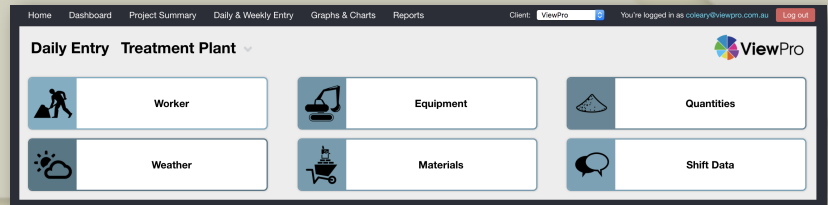
# Daily Entry

## Step 1: Daily Data Capture

A speedy data entry system that anyone can use.

An easy, intuitive interface allows users to quickly log their Daily / Weekly hours & quantities.

ViewPro removes the need to spend hours buried in cumbersome spreadsheets or complex project tracking systems.



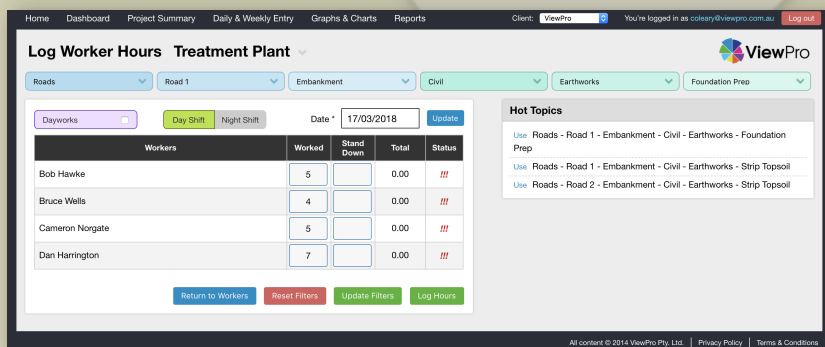
## Step 2:

### Worker & Equipment Hours

ViewPro makes logging worker and equipment hours simple by allowing users to assign hours to multiple items with a single click.

Simple to use and easy to follow process provides a nice user experience for all user levels.

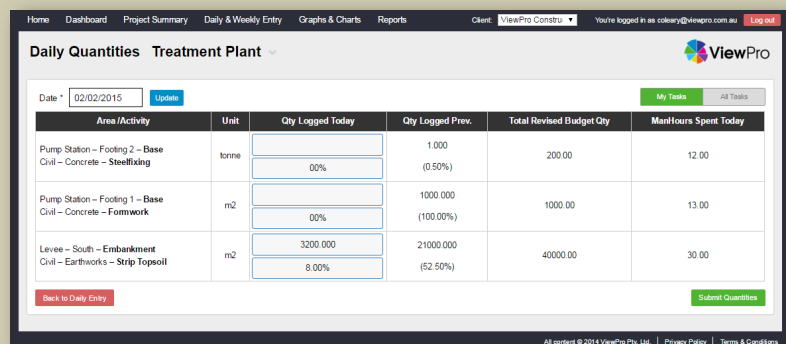
Clean fast data logging.



## Step 3:

### Quantity Complete / Progress

When all workers and equipment have been logged for a day, a unique list of tasks is presented to the user for that specific day. Summarising and presenting the tasks like this makes it simple for supervisor to estimate the work achieved for the period.



## Step 4:

### Materials & Other Costs

One-off items such as materials and subcontractor costs can also be entered for the day. This allows users to capture all costs on the project and also simplifies record keeping.

Home Dashboard Project Summary Daily & Weekly Entry Graphs & Charts Reports Client: ViewPro You're logged in as coleary@viewpro.com.au Log out

## Shift Data Treatment Plant

Date: 16/03/2018 Update

### Workers Logged

Name	Position	Shift	Hours Logged
Bob Hawke	Operator	Day	10.00
Bruce Wells	Site Manager	Day	11.00
Cameron Norgate	Engineer	Day	11.00
Dan Harrington	Steelfixer	Day	12.00
Dan Jacobs	Carpenter	Day	13.00
Edward May	Engineer	Day	13.00
Eric Burke	Carpenter	Day	13.00

### Equipments Logged

Equipment	No.	Shift	Hours Logged
32 Tonne	EX 001	Day	6.00
Moxy	Moxy 10	Day	8.00
Moxy	Moxy 11	Day	6.00
Moxy	Moxy 12	Day	6.00
Moxy	Moxy 13	Day	6.00

### Work Areas

Description
Roads - Road 1 - Embankment - Foundation Prep
Roads - Road 1 - Embankment - Strip Topsoil
Roads - Road 2 - Embankment - Strip Topsoil

### Scope Of Work Today

Enter Scope of Today

### Scope Of Work Tomorrow

Complete Road 1 - Foundation Prep

### DELAYS

Rain Delay for 50 Min

### ISSUES

Enter Issues Reported

### VARIATIONS

No Site Instruction issued for substation works

### COMMENTS

Enter comments (optional)

### HSE COMMENTS

Enter HSE comments (optional)

### ADD PICS

Choose Files No file chosen

### ADD PDF

Choose Files No file chosen

### Incidents - Daily

LTI	MTI	FAI	RWC	NM	ENV	EQUIP	Other
0	0	0	0	0	0	0	0

### Daily Leading Indicators

Daily Insp.	SWO	Take 5	Hazard Cards	Pre-Start	Toolbox
1	0	23	4	0	0

### Daily Meetings

Pre-Start	Toolbox
0	0

### PHOTOS

Back to Daily Entry Submit Comments

## Step 5: Shift Data

ViewPro's shift data section allows supervisors and engineers to capture all site specific data in one place resulting in the ultimate Site Diary.

This information will then be automatically displayed in a daily shift report showing the following:

- Worker hours
- Equipment hours
- Work areas today
- Scope of works today
- Scope of works tomorrow
- Delays, Issues, Variations
- Comments, HSE Comments
- Safety stats logging and tracker
- Image Upload
- PDF Upload (Site Instructions etc)

## Step 6: Reports

All data captured is then summarised and presented in detailed intuitive reports. ViewPro will automatically calculate all production rates and compare them to the budget estimates so site teams can easily identify any areas that need attention.

Real Time Production Analysis with less time and effort.

Home Dashboard Project Summary Daily & Weekly Entry Graphs & Charts Reports Client: ViewPro Constru You're logged in as coleary@viewpro.com.au Log out

## Weekly Quantities Reporting Treatment Plant

Project Week 44 (02/05/20) Submit Generate PDF

### Week 44

Saturday - 02/05/2015 to Friday - 08/05/2015

Week 44 Confirmed Production Factor	Overall Production Factor	Week 44 Project Completed	Overall Project Completed	Week 44 Manhours Direct Spent	Overall Manhours Direct Spent
1.01	0.95	3.09%	80.75%	970	23,945

Area / Activity	Unit	Actual Qty Completed	Est Qty Completed	Supervisor Qty. VS. Engineer Qty	ManHours Earned	Spent ManHours	This weeks ViewPro Rate Unit/MH	Production Factor	Budget Rate	Actual Rate
Civil										
Concrete										
Water Treatment Plant										
Main Facility										
Base - Steelfixing	tonne	50	36	-27%	496	530	0.09	1.07		
Earthworks										
Levee										
North										
Embankment - General Fill	m3	29,000	20,000	-31%	464	440	65.91	0.95	\$8.60	\$4.62

Day	Saturday	Sunday	Monday	Tuesday	Wednesday	Thursday	Friday	Estimated
Date	02-May-15	03-May-15	04-May-15	05-May-15	06-May-15	07-May-15	08-May-15	Overall PF
Daily Estimated PFs	2.50	1.67	3.33	1.31	1.31	1.46	0.63	1.42

All content © 2014 ViewPro Pty. Ltd. | Privacy Policy | Terms & Conditions



## Clients



## Headquarters

### ViewPro Pty Ltd.

100/102 Brisbane Rd, Suite 16  
Mooloolaba, QLD 4557  
Australia

T. +61 427 457 771  
[www.viewpro.com.au](http://www.viewpro.com.au)

[info@viewpro.com.au](mailto:info@viewpro.com.au)